



Bernardo C. Sandoval Sr. Municipal Swimming Pool

**BEEVILLE**  
**PARKS, RECREATION AND**  
**OPEN SPACE MASTER PLAN**

**2024 TO 2034**

**CITY OF BEEVILLE  
RESOLUTION NO. 2024-10**

**A RESOLUTION OF THE CITY COUNCIL OF THE CITY OF BEEVILLE, TEXAS  
ADOPTING THE TEN-YEAR PARKS, RECREATION AND OPEN SPACE MASTER  
PLAN; FINDING AND DETERMINING THAT THE MEETING AT WHICH THIS  
RESOLUTION WAS PASSED WAS OPEN TO THE PUBLIC AS REQUIRED BY LAW.**

**WHEREAS**, the City Council of the City of Beeville recognizes the need for a Parks, Recreation and Open Space Master Plan “the Plan” to provide goals, assessments, standards, recommendations, and strategies for implementation over the next ten (10) year period in an effort to provide for and continually improve park and recreational facilities, provide trail opportunities, preserve open spaces and rehabilitate existing parks in the City of Beeville; and

**WHEREAS**, the primary objective of “the Plan” is to provide recreational services desired by the citizens of Beeville, acquire needed open spaces, and preserve natural resources; and

**WHEREAS**, in order to address recreational needs in the future, the City of Beeville has sought input from the citizens of Beeville through surveys, public input meetings, and City of Beeville staff, and that input has been incorporated into “the Plan”; and

**WHEREAS**, “the Plan” complies with Texas Parks and Wildlife Department master plan guidelines which require parks and recreation needs to be prioritized and addressed in an action plan format; and

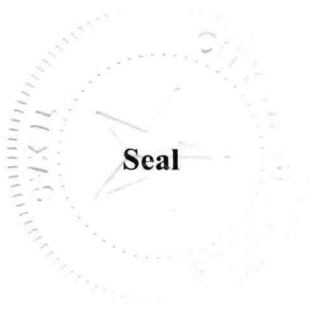
**WHEREAS**, the City Council, having taken into consideration the results of the in-depth study conducted by P,R& S, LLC for the City of Beeville, determines that “the Plan” is reasonable.

**NOW THEREFORE, BE IT RESOLVED BY THE CITY COUNCIL OF THE CITY OF BEEVILLE, TEXAS:**

That the 2024-2034 Parks, Recreation and Open Space Master Plan for the City of Beeville, Texas, is hereby officially adopted, and incorporated herein for all intents and purposes as shown in Exhibit A.

A top ten (10) priority list of park amenities has been developed to guide the rehabilitation of existing parks, provide guidance in funding applications, and suggest alternative funding opportunities. Adoption of the 2024-2034 Parks, Recreation and Open Space Master Plan shall not commit the City of Beeville to specific funding levels or implementation strategies but shall provide guidance for the City’s vision for the availability and growth of park and recreational services.

**DULY PASSED, APPROVED and ADOPTED** this 28<sup>th</sup> day of May 2024 at a regular meeting of the City Council of the City of Beeville, Texas by a vote of 4 “for”, 0 “against”, and 0 “absent”.



**CITY OF BEEVILLE**

A handwritten signature in blue ink, appearing to read "Michael Willow II", is written over a horizontal line.

Michael Willow II, Mayor

**ATTEST:**

A handwritten signature in blue ink, appearing to read "Gabriela Hernandez", is written over a horizontal line.

Gabriela Hernandez, City Secretary

**APPROVED AS TO FORM:**

A handwritten signature in blue ink, appearing to read "Frank W. Warner", is written over a horizontal line.

Frank W. Warner, City Attorney

## TABLE OF CONTENTS

|  |    |
|--|----|
| 1. Executive Summary                             | 3  |
| 1.1 Then and Now                                 |    |
| 1.2 Goals and Objectives                         |    |
| 1.3 Citizen Surveys and Focus Groups             |    |
| 1.4 Implementation                               |    |
| 2. City of Beeville                              | 9  |
| 2.1 History                                      |    |
| 2.2 Population                                   |    |
| 2.3 Age and Gender                               |    |
| 2.4 Income and the Economy                       |    |
| 2.5 Education                                    |    |
| 3. Why a Master Plan                             | 14 |
| 4. Needs Assessment and Survey                   | 15 |
| 5. Goals and Objectives                          | 16 |
| 6. Master Plan Recommendation/Top Ten Priorities | 19 |
| 6.1 City Parks                                   | 20 |
| a. Flournoy Park                                 |    |
| b. Klipstein Park                                |    |
| c. Koehler/ El Nopal Park                        |    |
| d. Moore Park                                    |    |
| e. Poesta Park                                   |    |
| f. Carlos Reyes Park                             |    |
| g. Trevino Park                                  |    |
| h. Veterans Park                                 |    |
| 6.2 Non-City Parks                               |    |
| 6.3 Trails                                       |    |
| 7. Implementation                                | 36 |
| 8. Appendix                                      | 38 |
| a. Citizen Survey                                |    |
| b. Survey Results                                |    |
| c. Focus Groups                                  |    |
| 1. High School Coaches                           |    |
| 2. Boys and Girls Club                           |    |
| 3. City Staff Planning Meeting                   |    |
| 4. Rotary Club                                   |    |
| d. Park Photos                                   |    |
| e. Park Inventories                              |    |
| f. City Council Minutes                          |    |



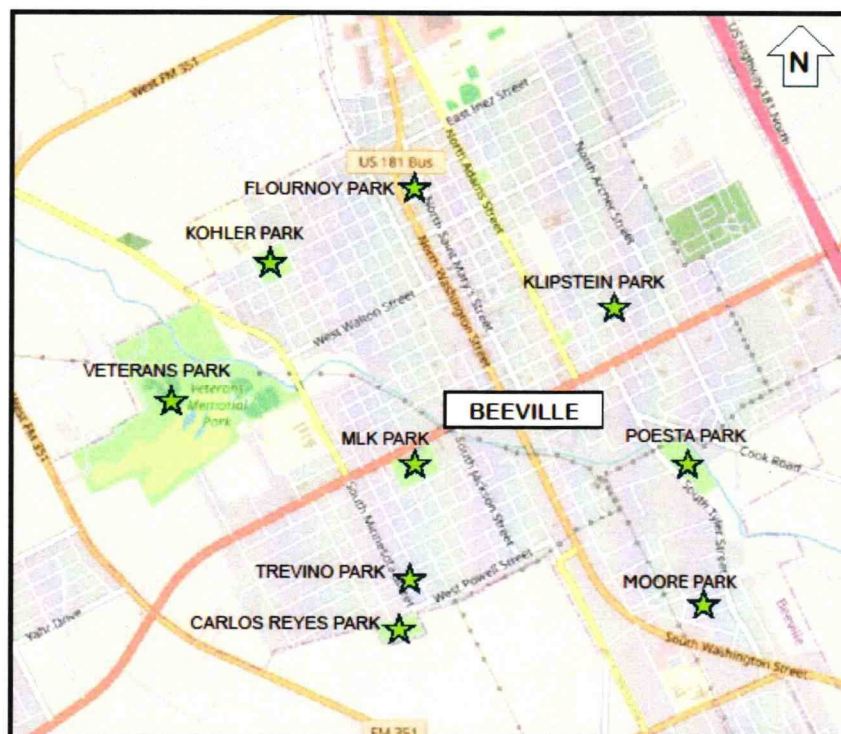
# 1. EXECUTIVE SUMMARY

## 1.1 Beeville Then and Now

The City of Beeville has had a long history of development dating back to the 1850's. The population began to flourish in the early 1930's to 1960's when the naval air station was being used for training. Once the base was decommissioned in the 1990's, the population began to decline. It was not until the 2020's the population began to grow again. This has created slow growth in the park system.

Currently, the city has nine (9) parks. That number has been consistent since the early 2000's. Other facilities in the city have amenities that can serve as parks. These include public schools, private schools, the Barnhart Museum, and other open spaces.

BEEVILLE CITY PARKS



Park and Recreation facilities are essential for a healthy, quality community. These facilities provide the components for sustainable communities creating positive existence outside the realms of work, school, and social activities. Whether the activities are active or passive, Park and Recreation facilities are an important part of everyday life. The municipal infrastructure is comprised of police, fire, streets, water, parks and open spaces.

The purpose of the Beeville Park, Recreation and Open Space Master Plan are:

- To determine the current and future needs for residents and visitors in the areas of parks, open spaces, and facilities.
- To guide the planning efforts for developing "first class" parks and recreation systems.
- To guide the development of community partnerships for park development and program operations.
- To identify future tourism potential and revenue opportunities for the Park and Recreation department.

## 1.2 Goals and Objectives

Goals and objectives represent the values of the Beeville residents, these were expressed through the responses of the community survey and their vision for a first-class park system. It should be noted that these are the same goals generated in the 2002 and 2010 Beeville Master Plans. The goals have not been completed from either one of those plans and remain relevant to the park system in 2023.

### **GOALS:**

- **To provide new opportunities for outdoor activities that reflect current trends in sports and fitness, currently not present in the system.**
- **Support organized sport leagues by improving/maintaining fields and encourage improvements funded/donated by the league.**
- **Provide infrastructure and accessible improvements throughout the park system.**
- **Provide improved site amenities throughout the park system that will support economic and tourism development.**
- **Preserve open areas and wildlife habitats.**
- **Encourage local partnerships to promote city park and recreational facilities.**
- **Opportunities for revenue generation.**
- **Develop a 10- year Capital Improvement Program**

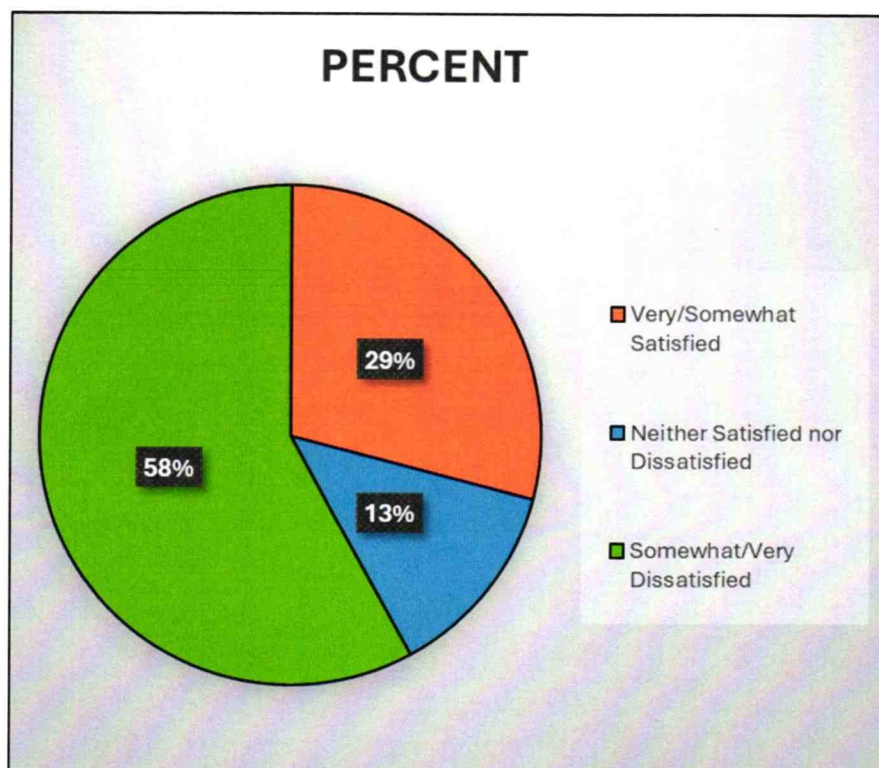
### 1.3 Citizen Survey and Focus Groups

The city developed a citizen survey for the 2023 Parks, Recreation and Open Space Master Plan that was advertised to the public and available online through the city website, during the month of September. The results showed a large percentage of those surveyed were either "very dissatisfied" or "somewhat dissatisfied" with the quality of parks and recreation in Beeville. This theme remained consistent throughout the survey document. The questions related to the quality of parks, quality of special events, and the quality of programs offered all had ratings of 42% to 58% of being "somewhat dissatisfied" or "very dissatisfied". Those scores of "neither satisfied or dissatisfied" also had ratings of 14% to 24%. The Online survey of satisfaction levels with the city parks in Beeville had 168 respondents.

How satisfied are you with the quality of parks and recreation in Beeville?

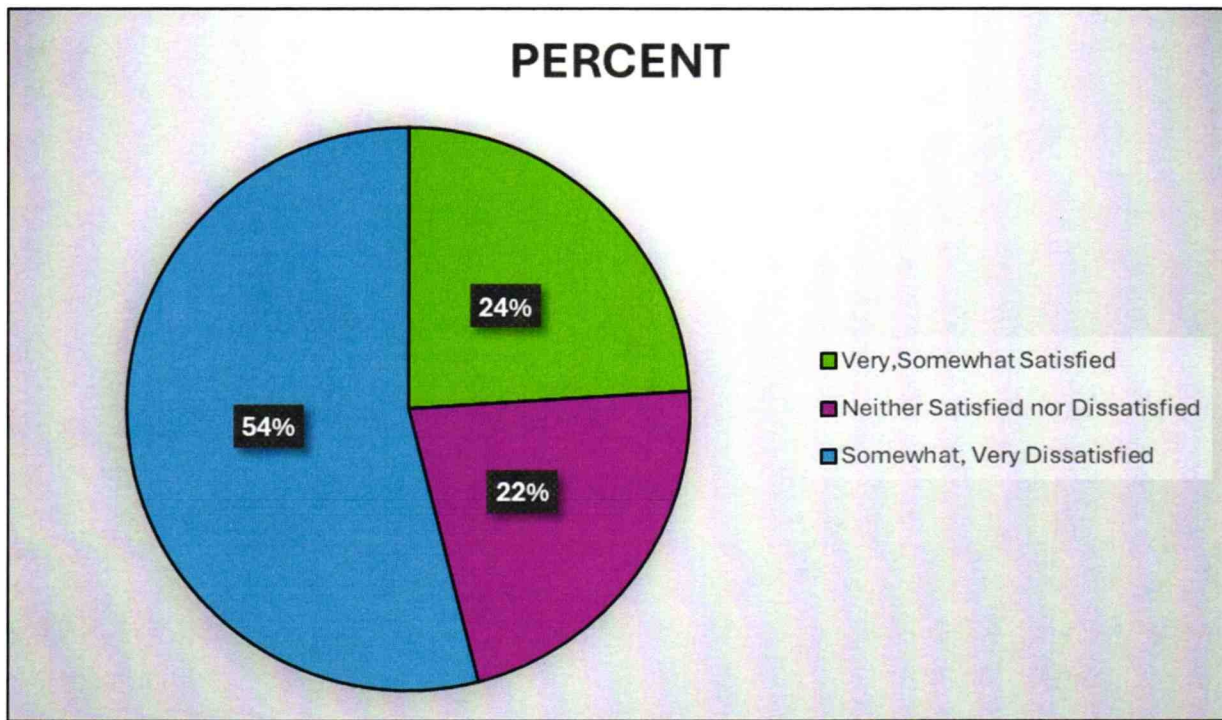
NUMBER RESPONDING

|                                    |      |
|------------------------------------|------|
| Very satisfied                     | (4)  |
| Somewhat satisfied                 | (45) |
| Neither satisfied nor dissatisfied | (22) |
| Somewhat dissatisfied              | (58) |
| Very dissatisfied                  | (39) |



How satisfied are you with the quality of recreational programming in Beeville?  
(Example: Youth, Teen, Adult, Senior)

|                                    | NUMBER RESPONDING |
|------------------------------------|-------------------|
| Very satisfied                     | (8)               |
| Somewhat satisfied                 | (32)              |
| Neither satisfied nor dissatisfied | (38)              |
| Somewhat dissatisfied              | (54)              |
| Very dissatisfied                  | (36)              |





### The Top Ten Rankings of the survey were:

|                                 |                      |
|---------------------------------|----------------------|
| 1. Splash Pad                   |                      |
| 2. Playground                   |                      |
| 3. Ampitheater                  |                      |
| 4. Linear Parks and Trails*     | *Tie between 4 and 5 |
| 5. Nature Park and Development* |                      |
| 6. Soccer Fields                |                      |
| 7. Pickle Ball Courts           |                      |
| 8. Large Community Park         |                      |
| 9. Trails to Link the City      |                      |
| 10. Youth Softball              |                      |
| 11. Recreation Center           |                      |

Beeville is experiencing growth from individuals who are moving into the area from other cities and states. Those individuals are bringing new ideas for ongoing programs, special events, and maintenance. Those topics were shared at the Rotary Club Meeting on November 1, 2023. The group offered suggestions:

- Big entertainment such as a Christmas Extravaganza
- Venues for entertainment
- Park at Barnhart Museum on Adams St.
- Small zoo
- Pickleball
- Outdoor fitness equipment
- Barrier free equipment
- Water fountains
- Adult swimming programs
- Lazy river
- Program services
- Parks serve as an attraction for the community
- Connect trail systems

While some of the suggestions can be implemented by changing operation hours, many will have to be included in an overall capital improvements budget. These program and facility suggestions differed from those that ranked the highest in the online survey.

The top ten listing has the ability to collapse into generic titles to encompass greater flexibility. All trails can be identified as new trail development. All sport fields can be identified

as athletic field development. A swimming pool can include additional amenities such as a lazy river, lanes for lap swimming, and even a splash pad area. It should be noted in the survey that the largest number of respondents were from the Northeast quadrant of the city, which does not have access to many of the amenities noted in the top ten list. A greater discussion of the survey is included in **Section 8, Implementation**.

## **1.4 Implementation**

Implementation is the most important step in the planning process. A Master Plan is a working document with routine updates, to ensure decisions made for capital improvement plans and grant applications are applicable. Great care should be taken to ensure the recommendations are viable and consistent with other City Comprehensive Plans, as well as land development regulations, capital improvement programs and city budgets.

The Master Plan and the amended top ten amenities were approved at a City Council Meeting on May 28, 2024. (Attached agenda and minutes)

## **2. CITY OF BEEVILLE**

### **2.1 History**

The original and official site for Beeville was on the Poesta River and first settled by Burke, Carroll and Heffernan families in the 1830's. Beeville was established on 150 acres of land donated by Ann Burke in 1859, after the Republic of Texas was annexed by the United States. Beeville's first name was "Maryville" for pioneer Mary Heffernan.

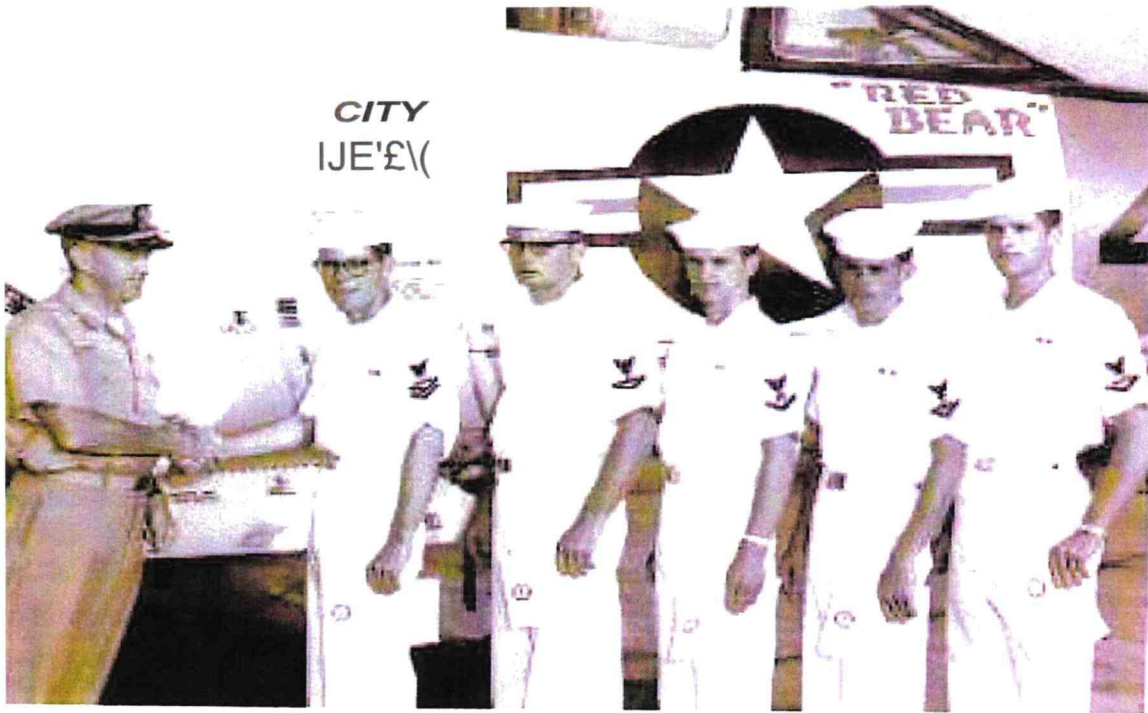
It was later renamed after Barnard E. Bee, Sr., who had served as Secretary of State and Secretary of War for the Republic of Texas. It was called Beeville-on-the-Poesta, with another community called Beeville-on-the Media to the west. Beeville saw its first post office in 1859. The city was incorporated in 1909 through a charter issued by the State of Texas and serves as the County seat for Bee County.

In 1886, the first railroad was constructed through Beeville, stimulating the growth of the economy and population. The Southern Pacific Transportation Company operated these railroads until the early 1970s.

Beeville served as the site for the Beeville Naval Air Station, where Navy airplane pilots trained during World War II from 1943 to its closing in 1946. The base was reopened in 1952 as Naval Air Station, Chase Field and continued in operation until 1992.

The Trans-Texas Airways operated during the 1950's with service on a Douglas DC-

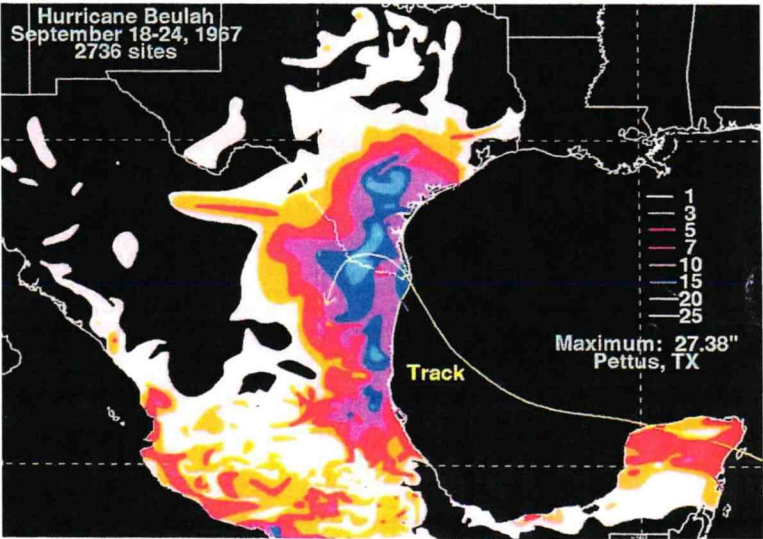
3 propeller airline from Chase Field with service to Brownsville, Corpus Christi, Harlingen, Houston, San Antonio, and other destinations in Texas.





Celebrities have even resided in Beville, Texas. Gutzon Borglum, the sculptor of Mount Rushmore, and his son Lincoln, lived in Beeville during the time Mount Rushmore was being sculpted.

In 1967, Beeville was inundated by 30 inches of rain during Hurricane Beulah. This destroyed many of the homes and buildings. Beeville had to rebuild. Beeville and the surrounding areas have been impacted by several major storm events since 1967.



2.2 Population

The original population of Beeville in 1880 was 208. The town has grown to 13,669 in the 2020 census. This positive growth in the city contrasts with the decline in population from the 1960's when Beulah came through and destroyed much of the town.

| Race   | Number | Percentage |
|--|--------|------------|
| White (NH)   | 2,851  | 20.86%     |
| Black or African American (NH)                         | 420    | 3.07%      |
| Native American or Alaska Native (NH)                  | 16     | 0.12%      |
| Asian (NH)   | 135    | 0.99%      |
| Pacific Islander (NH)                                  | 2      | 0.01%      |
| Some other race (NH)                                   | 30     | 0.22%      |
| Mixed/multiracial (NH)                                 | 215    | 1.57%      |
| Hispanic or Latino                                     | 10,000 | 73.16%     |
| Total  | 13,669 |            |
| 2020 Beeville Racial Composition<br>(NH= non-Hispanic) |        |            |



| <b>Census</b>   | <b>Population</b> | <b>%</b> |
|---|-------------------|----------|
| 1880  | 208               | -----    |
| 1890  | 1,311             | 530.3%   |
| 1910  | 3,269             | -----    |
| 1920  | 3,063             | -6.3%    |
| 1930  | 4,806             | 56.9%    |
| 1940  | 6,789             | 41.3%    |
| 1950  | 9,348             | 37.7%    |
| 1960  | 13,811            | 47.7%    |
| 1970  | 13,506            | -2.2%    |
| 1980  | 14,574            | 7.9%     |
| 1990  | 13,547            | -7.0%    |
| 2000  | 13,129            | -3.1%    |
| 2010  | 12,863            | -2.0%    |
| 2020  | 13,669            | 6.3%     |
| <b>Historical Population</b><br>U.S. Decennial Census |                   |          |

### 2.3 Age and Gender

Beeville has a larger than normal female population (51.6%). This compares to Bee County which has a total female population of 38.6%. The youth under 18 population in Beeville is also higher at 27.60% compared to Bee County at 20.3% and the State of Texas at 24.8%. This means the city, and Parks and Recreation will be developing programs that young families can participate in at a low cost.

Beeville is not near major cities for outside entertainment. It is approximately an hour to Corpus Christi and an hour and a half from San Antonio. This provides an opportunity for the city to offer programs and services as families will spend time in their home area to participate in recreational programming.

|   | <b>Beeville</b> | <b>Bee County</b> | <b>State of Texas</b> |
|---|-----------------|-------------------|-----------------------|
| <b>Persons under 5 years, percent</b>     | 7.10%           | 5.00%             | 6.30%                 |
| <b>Persons under 18 years, percent</b>    | 27.60%          | 20.30%            | 24.80%                |
| <b>Persons 65 years and over, percent</b> | 13.20%          | 13.20%            | 13.40%                |
| <b>Female persons, percent</b>            | 50.40%          | 38.60%            | 50.00%                |

Diverse programming to meet the needs of the youth and young families should be developed to support the community. The results of the citizen survey showed the need for programming for youth and special events. Splashpads, a recreation center, and large community parks ranked high as new facilities to be built.

The survey showed over 75% of respondents were women who are married. There were over 102 children noted in the survey from those who responded. Statements included the need for a larger recreation center for the youth and more diversified programs.

## 2.4 Income and the Economy

Beeville has become a "prison hub" since the employment for the business is stable for the community. The Texas Department of Criminal Justice (TDCJ) operates the Correctional Institutions Division Region IV office on the grounds of the Chase Field Industrial Complex, the former Naval Air Station Chase Field. In addition, there are 2 other prison units (Garza East Unit and Garza West Unit) transfer facilities co-located on the grounds of the naval air station approximately 5 miles outside the city limits of Beeville. The McConnell Unit lies about 1 mile outside the city limits adjacent to the Naval Air Station grounds. According to the TDCJ, the prison system in Beeville employs 20,000 correctional officers. This is more than the population of Beeville. The prison system is the main employer for Bee County.

The City established a Beeville Economic Improvement Corporation (BEIC) in 1996 to finance new and expand business enterprises in their local communities. The BEIC has been working to provide site locations for businesses on the property of the old Naval Air Station Chase Field. The Beeville Development Authority (BDA) manages the portion of Chase Field that is owned by the TDCJ. The BDA works to attract new businesses to Chase Field maintenance free.

|                              | Beeville | Bee County | State of Texas |
|------------------------------|----------|------------|----------------|
| <b>Income in dollars</b>     | \$47,815 | \$50,283   | \$67,321       |
| <b>Per Capita in dollars</b> | \$23,481 | \$22,347   | \$34,255       |
| <b>Poverty, percent</b>      | 26.70%   | 27.10%     | 14.00%         |

## 2.5 Education

Beeville has one Independent School District with approximately 3,500 students in six schools. There is one high school. There are several church related pre-schools for early childhood development. There is also, St. Phillip Episcopalian School (K-8<sup>th</sup> grade) and St. Mary's Academy Charter School (K – 6<sup>th</sup> grade), both church related.

Coastal Bend College opened in 1967 with 790 students. Today they have over 3,700 students with more than 1,200 being full-time. On campus dormitories and apartments provide affordable housing. The college provides associate degrees in 26 different fields. The college has off-campus sites in Alice, Kingsville, and Pleasanton.

Based upon input from staff at Coastal Bend College students do not feel like they are part of the community based on its location and their distance from the town center. Many students do not have transportation. Developing programs in conjunction with the college should be a goal for the future of programming in the community. There is an opportunity to develop a trail system that would provide access from the college to downtown and other areas of the city for the college students. The trail system should become a priority for the city to develop through grant programs.

### **3. WHY A MASTER PLAN**

Parks, Recreation and Open Space Master Plans have been developed to meet the requirements of Texas Parks and Wildlife for grant applications, to allow governments to plan for future development of its park system and recreation programming. The process of including the community in the development of the plans creates ownership in improvements to existing facilities, and in the future facilities that are constructed. There needs to be an annual review process of the plan. This can be done through a Parks and Recreation Advisory Committee or as a function of the city council.

Community meetings bring different representatives together to discuss needs and wants for a 10-year period. The Master Plan addresses issues for citizens of all ages, active and passive pursuits, social interactions, and safety and security concerns.

The Plan allows the city to invest in the parks system, improving the quality of life for life in the community, which in turn helps to attract new residents and contributes to the economic development of the city. Improvements to the city's public or open spaces provide a positive and desirable image to residents, visitors, and investors.

In addition, the Master Plan established criteria for acquiring and developing new parks, by addressing areas that have a void now. Through the surveys the type, design, location, spacing and method of financing can be included. A Master Plan can preserve valued and open space of environmentally sensitive lands for the benefit and enjoyment of future generations.

The 2000 U.S. Census predicts that by the year 2050 one person in every four will be 65 years of age or older, creating affluent groups of retirees. Beeville and areas adjacent have become havens for "Winter Texans" who do not want to go to the Rio Grande Valley but have disposable income which adds to the community. These individuals want trails, natural habitat areas, tennis courts, pickleball courts, practice fields, and convenient senior centers. While the current population shows young families, for six months out of the year the influx of seniors changes the dynamics of the community. Creating an RV Park within

Veterans Park will allow for short term rentals and a revenue source for the city.

Parks, Recreation and Open Space Master Plan are meant to be a guide for public policy and private decision making for the Parks and Recreation Department and city administration. The Park, Recreation and Open Space Master Plan is divided into sections that follows the Texas Parks and Wildlife Department (TPWD) guidelines for a Master Plan, the Texas Outdoor Recreation Plan (TORP), and the TPWD Guidelines for Grant Applications.

**This is a long-range, comprehensive plan which is designed to accomplish the following:**

- **Identify needs and priorities for parks and recreation areas for tourism development**
- **Identify strategies and opportunities for revenue generation and economic development**
- **Re-assess the needs for parks, recreational areas, facilities, and improvements based upon community input**
- **Recommend strategies for acquiring, developing, operating, and maintaining public parks and recreation areas and facilities**
- **Assess the adequacy of the existing park system and identify improvements necessary to bring it to an acceptable level of standard**
- **Establish a priority park amenity listing for grant applications**
- **Realize opportunities for joint use arrangements**
- **Identify recreational programming opportunities.**

#### **4. NEEDS ASSESSMENT AND CITIZEN INPUT**

The City of Beeville initially embarked on two (2) projects to gain as much support and information as possible for the Parks, Recreation and Open Space Master Plan. An online survey for the citizens, on the city's website, was available for a month. The survey received 168 responses, with an additional 10 responses when the survey date was extended. The second project was to hold five (5) focus groups at various times within the community. These did not produce the result as expected with only limited attendance. Two (2) additional projects were added when the focus groups did not produce the results required. Those were a formal presentation at the Rotary Club meeting and distribution of surveys at churches, and ballfields.

The survey results showed the largest number of respondents came from the section of the city northeast of Washington and North of Hwy. 59. The other three (3) quadrants were equally divided in respondents. Respondents were also "Somewhat Dissatisfied" with the quality of parks in Beeville with a rating of 58 percent. There were only 4 percent that were "Very Satisfied" with the parks.



The city's survey was conducted with the objective of determining if parks are in sufficient supply and location to appropriately meet the needs of the community. The number of deficiencies was determined by applying standards to the current population, the existing acreage, number of facilities, improvements, and projected growth of the area. Using the same approach of determining the current population needs, can assess what the future population will need.

The National Recreation and Park Association (NRPA) Recreation, Park and Open Space Standards and Guidelines recommends an average of 6.25 to 10.5 acres of mini neighborhood and community parks per 1,000 persons. Given Beeville's conditions, the minimum NRPA standards of 6 to 7 acres per 1,000 persons is a good standard. This is the same standard used in the 2002 and the 2010 Master Plans.

NRPA has set a standard of "10-Minute Walk to a Park" for communities to develop new parks. In the previous two (2) Beeville Master Plans the criteria for park development was that a park should serve a neighborhood within a ½ mile radius for neighborhood parks. This would meet the NRPA criteria. However, there are several areas of the city that do not have parks.

The school district has playground equipment on site, and green space that could be utilized as play spaces by developing an interlocal agreement for afterschool hours and on weekends. This would eliminate the need for additional parks to be built throughout the city. Elementary schools have historically included playgrounds within the grounds of the school. Elementary schools have also been built in neighborhoods which are walkable for children to attend. Those schools with playgrounds could serve as additional recreational sites for communities without Beeville having to build a new park or adding additional playgrounds.

Specific questions related to park development were:

Question 6: *"From Question 5, which is the most important choice for you?"*

The number 1 choice was a splash pad, followed by number 2 recreation center, and number 3 large community parks. This was not the final ranking in the overall top ten when all the scores from the four questions related to park development were totaled.

## **5. GOALS AND OBJECTIVES**

The City Vision Statement:

Beeville will become proactive and make collaborative efforts for community enhancement that will make it a thriving, attractive, and unified place for residents

and employers for a higher quality of life through opportunities.

**The City Mission Statement:**

The City of Beeville is dedicated to delivering services in a timely fashion using cost effective methods that enhance the quality of life for all residents.

**The Parks and Recreation Department Mission Statement:**

The mission of the Parks and Recreation Department is to enhance the quality of life by providing safe, well-maintained parks and public places, preserving open space and historic resources, caring for people, strengthening the bonds of community, and creating opportunities for renewal, growth, and enrichment.

The goals identified below are the same as those from the 2002 and 2010 Master Plan. Many of those goals and objectives had never been completed. Based on the current survey, the same goals are applicable to the current plan with some modification of the objectives. Each goal has some types of programs, or services the city could add. The list is not inclusive.

**GOAL 1: Provide new opportunities for outdoor activities that reflect current trends in sports and fitness, currently not present within the system.**

- Skate Park
- Dog Park
- Nature Trail
- Bike Trails
- Fishing Lake
- Camping
- Sport Tournaments
- Special Events

**GOAL 2: Improving/Maintaining fields and encourage improvements funded/donated by the leagues.**

- Soccer Fields (support group strongly favors this and the revenue that can be generated from tournaments)
- Pop Warner Football Fields
- Little League Baseball and Softball Fields
- Volleyball and Basketball Court

**GOAL 3: Provide infrastructure and accessible improvements throughout the park system that will support economic and**

**tourism development.**

- Improve all park facilities to meet the Americans with Disability Act.
- Take into consideration the needs of the elderly and disabled during planning and designing facilities and activities.
- Include a member of the disabled community to participate in the design process.
- Grading and drainage to ensure maximum use of the property for sport fields.
- Fencing, lighting, and irrigation to improve the aesthetics of the park site for the community.
- Include members of the community directly involved in tourism to assist with planning special events. Think outside the box.  
(Example: Birding Festival)

**GOAL 4: Continuously provided improved site amenities throughout the park system.**

- Playscapes
- Sunshades
- Signage
- Landscaping
- Picnic Facilities, Pavilions, Barbeque Pits

**GOAL 5: Preserve open areas and wildlife habitats.**

- Make use of natural terrain and resources in the design of parks.
- Enhance and improve known wildlife habitats.
- Construct gardens that attract butterflies, hummingbirds, and other types of birds.
- Acquire land to be designated for open areas and wildlife habitats.

**GOAL 6: Encourage local partnerships to promote City's parks and recreation facilities.**

- Develop inter-local agreement between the Beeville ISD and the city.
- Partnerships can create benefits for the city to expand program services for youth and adults, greater utilization of existing facilities, and non-duplication of facilities.
- Partnerships allow for training of college students for summer and full-

time positions for city jobs, and those in other industries within the community, that provide recreational and sport programs.

**GOAL 7: Develop a trail and linear park system throughout Beeville.**

- Expand the trail system to Coastal Bend College.
- Utilize the drainage area for trail expansion.
- Develop trail systems that allow for walkability to schools.

The objectives should be evaluated on an annual basis with the completed objectives removed and new objectives added, as deemed important for the advancement of the department. Trends change and priorities change for the city. Those changes should be reflected in the goals and objectives for the Park and Recreation Department. The Park and Recreation Department Goals should reflect the Mission and Vision Statement of the Department and the city.

A Parks and Recreation Advisory Board should be established to assist the department in developing new programs and to serve as a volunteer base for special events. The Board can evaluate the Master Plan on an annual base and update as needed. Members of the Parks and Recreation Advisory Board should represent the facilities and programming interest of the community. Those interests should be diverse, including youth and adult programming.

## **6. MASTER PLAN RECOMMENDATION/TOP TEN PRIORITIES**

The recommendations for the Parks, Recreation and Open Space Master Plan have been developed through community input meetings. These are recommendations and may not be the same as the implementation plan in Section 8 nor the Top Ten Priorities. The improvements suggested in Section 7 are for actual amenities the community would like to see developed in future parks. There are also concerns residents have about existing parks and future parks. These include the following:

- Security in parks. Residents feel there is not enough security in the parks and/or trails for individuals to be able to walk or jog late in the evening or early in the morning. With the weather so hot during the summer, the only reasonable time to walk or jog is early morning or later in the evening.
- There is concern that there are no sidewalks in most of the areas of town. This creates a problem for mothers with strollers. There is no safe way to walk to nearby parks.

Due to the age of the City's existing parks, maintenance levels, lack of irrigation, and routine fertilization programs have been non-existent. The need for improved maintenance can be seen in the pictures taken of the parks in 2023 for the Park Inventory in **Section 6**.

Staff level reductions in the Parks Department, due to limitations of the city's overall budget, have contributed to reduced maintenance. In addition, new areas of maintenance such as right-of-way areas, city buildings, and drainage areas have been added to the Park Department maintenance duties which exacerbates the maintenance issue. Many of the parks show dried grass or no grass areas. This is due to a lack of water or maintenance to the grounds.



The city needs to look for opportunities to get more of the community involved in helping with the maintenance such as utilization of a Master Gardner program, begin a city volunteer program, work with the college to offer internships to assist with maintenance. The city needs to be proactive and acquire land in the areas that do not have any parks before the land is gone or becomes too expensive. This land should be in larger sections of 10 to 50 acres.

The city needs to set up a revitalization program for inner-city parks and establish a timeline of when they will be upgraded. Many of these parks are over 50 years old.

All lights need to be utilizing energy efficient equipment with routine checks to make sure they are working.

There should be no new facilities built unless there is an operating budget approved with the construction budget.

The citizens appreciate all the work that is being done on the parks but become frustrated when their suggestions are not heard nor acted upon. As with many cities in Texas, there is old equipment within the parks. Those should be upgraded with new trending and improved equipment. In some parks there is old, outdated, and potentially dangerous equipment right next to new equipment. This creates an unpleasing comparison in the park. As those older sites are being re-developed, the parks need to meet the needs of the community.

In the community survey document, the question receiving the highest response was the need to provide a recreation center for the community. Individual responses included the fact that the current site operated by the Boys and Girls Club was too small, did not offer a variety of programs, and did not offer a variety of girls programs.

A splash pad was ranked number two (2), and Large Community Park ranked third (3). All responses could be contributed to families who are looking for activities they can participate in together.

The top ten priority list was determined by totaling the different categories where respondents identified their priorities for the future. These totals comprised questions 5, 6, 7 and 8.

### The Top Ten Priorities are:

|                                 |                      |
|---------------------------------|----------------------|
| 1. Splash Pad                   |                      |
| 2. Playground                   | *Tie between 4 and 5 |
| 3. Ampitheater                  |                      |
| 4. Linear Parks and Trails*     |                      |
| 5. Nature Park and Development* |                      |
| 6. Soccer Fields                |                      |
| 7. Pickle Ball Courts           |                      |
| 8. Large Community Park         |                      |
| 9. Trails to Link the City      |                      |
| 10. Youth Softball              |                      |
| 11. Recreation Center           |                      |

While Beeville has both a splash pad and large community park, these amenities could be added in different neighborhoods offering attractions requested by the community such as an amphitheater for outdoor movies or summer concerts, an additional skatepark, larger picnic areas for family gatherings, a Play for All Playground for children with disabilities. A splash pad could include modern play modules with picnic areas for families to use while their children are playing.

Additional information showed that 102 respondents had children under 18, 119 were married, and 112 were women who completed the survey.

Beeville has a central business district and schools that can be considered anchors for neighborhoods. A good trail system could allow individuals to reduce green-house emissions by using the trails to walk or bike to work, shop or attend school. Utilizing drainage and flood plain areas, there is the potential in future years to develop a linear park system and connect a trail circling Beeville allowing for a longer route for bicyclists and joggers.

## **6.1 CITY PARKS**

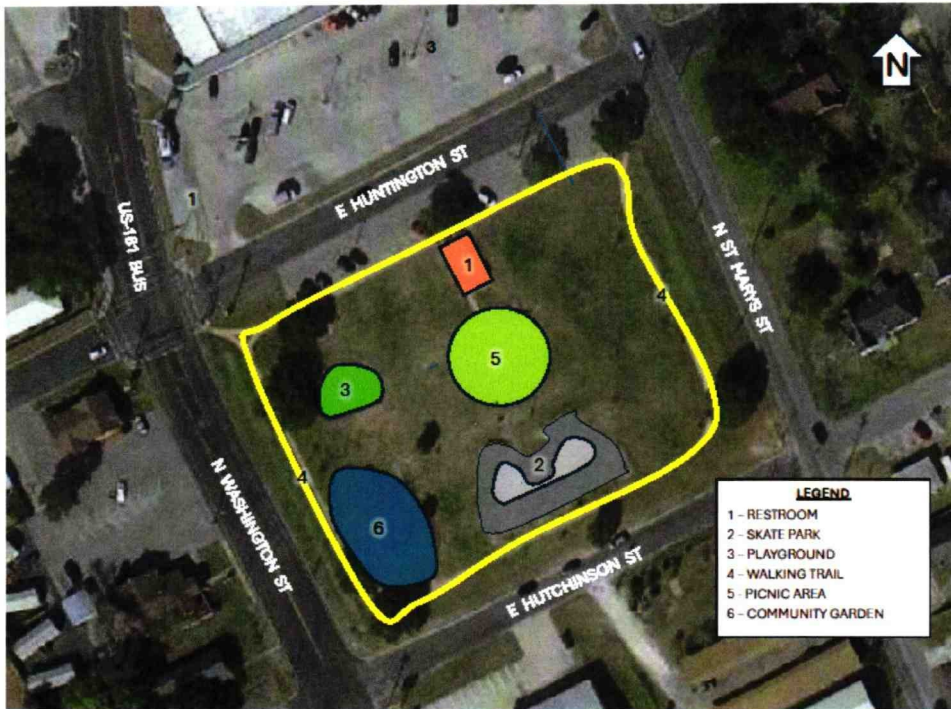
Beeville has 9 main parks which are included in the Master Plan. In the following pages, there is a page with pictures of the current conditions of each park. The second page outlines the current amenities available in the park while the third page denotes the recommended updates and/or improvements to the park site. The improvements are not date specific, as a priority list, developed by the Parks and Recreation Advisory Board with target dates and approved by City Manager, should be developed to continue with the community involvement. Those improvements can then be included in grant applications for the city.

Koehler or Nopal Park has an interesting history in that it originally was just an open field used by the neighborhood kids. It then turned into a dumping ground for old vehicles and other equipment items. At the same time Chase Field was being developed and the city found caliche in Koehler Park which was used to build Chase Field. This went on for several years, until the 2nd World War, when the parts from the old vehicles and machinery that were dumped on site became valuable for the war effort. At this time, the area began to be cleaned up, with all the old vehicles, equipment, and machinery being moved out. There was a need for a real park in the area so the Beeville City Manager, Layton Adams, began to fill all the holes and grade the entire area. A jet from Chase Field was placed on the park and a baseball field was constructed. At one time the park had a concession stand, lights, bleachers, and dug outs. However, there were no programs for girls. This is an example as to how many parks in cities were developed. The land starts out as a different purpose, eventually becoming a park out of necessity for the neighborhood or the community. Jesse Garza, who has lived across the street from the park remembers many of the stages of the park and used to play there, even using the abandoned vehicles for playground equipment.

Beeville's parks show a lack of maintenance resulting in antiquated playground areas, limitations on new park amenities and activities and reduced or lacking amenities in different sections of town. The need to address the concerns of the community identified in the online survey to expand services and park amenities in all areas of town can be accomplished through an active grant program. Improving maintenance with a Master Gardener Program, programs in conjunction with the College, and volunteers is another way to expand community involvement and improve the park system. Adopt-A-Park with area schools is an excellent program for school children to participate.



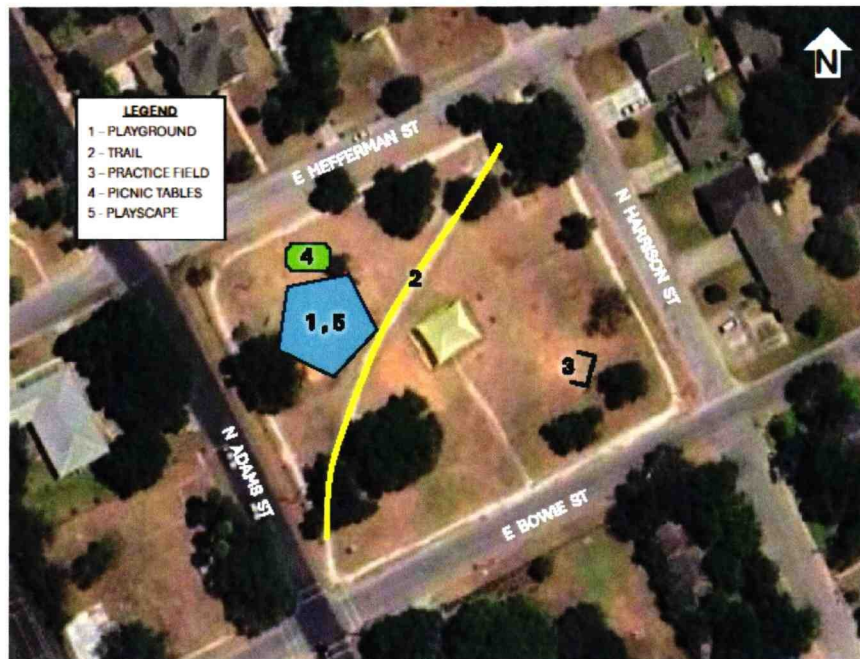
# FLOURNOY PARK CURRENT AMENITIES



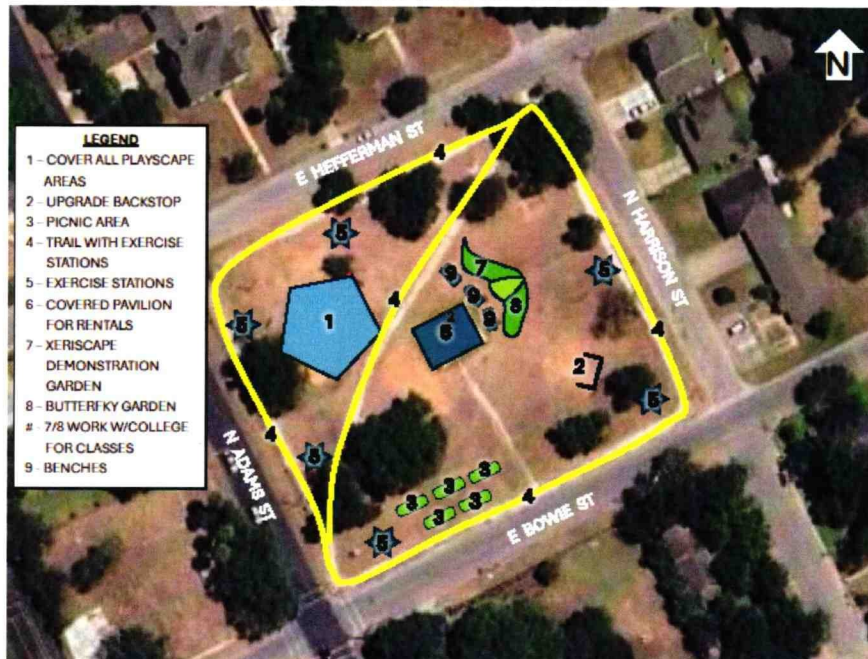
# FLOURNOY PARK RECOMMENDED IMPROVEMENTS



# KLIPSTEIN PARK CURRENT AMENITIES



# KLIPSTEIN PARK RECOMMENDED IMPROVEMENTS





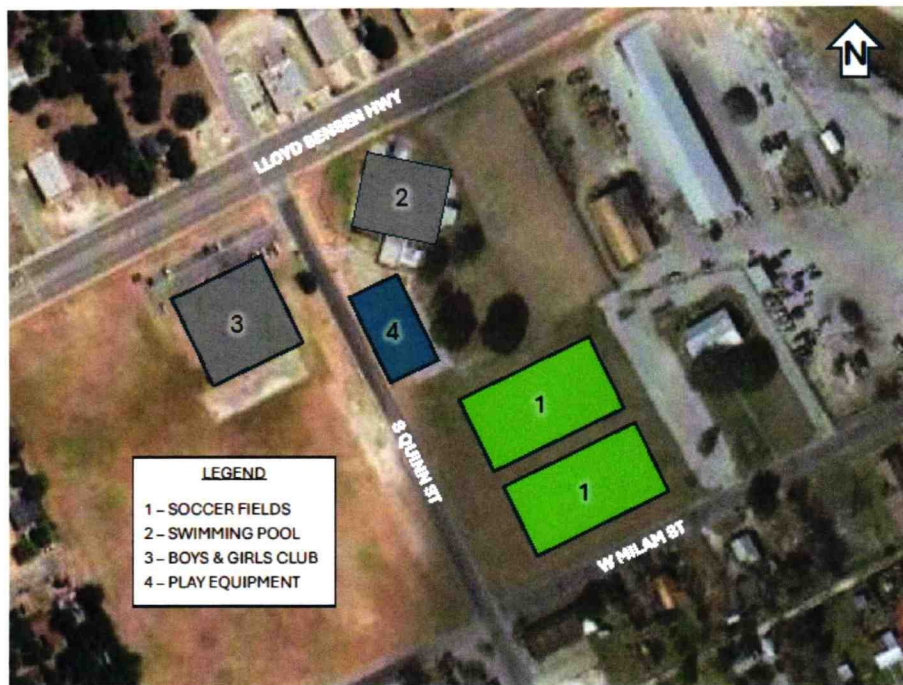
## KOHLER PARK CURRENT AMENITIES



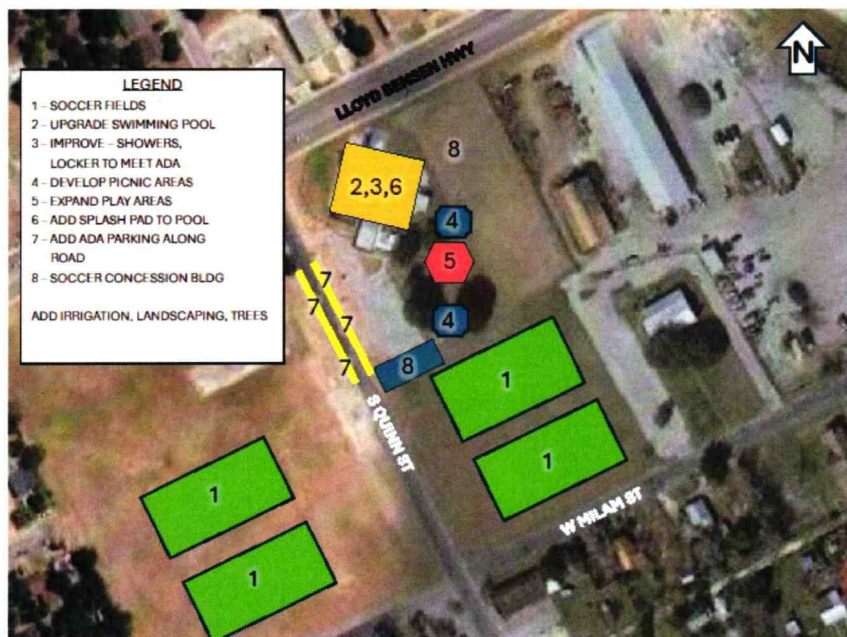
## KOHLER PARK RECOMMENDED IMPROVEMENTS



# MARTIN LUTHER KING PARK CURRENT AMENITIES

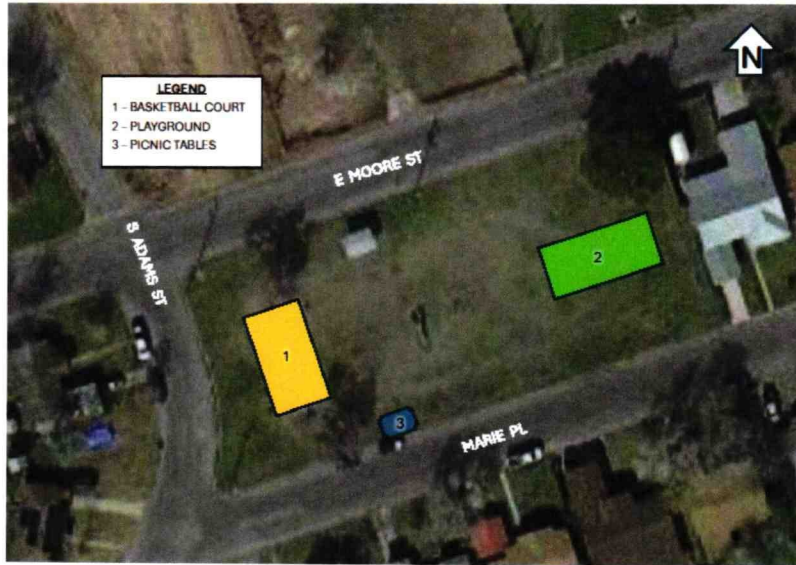


# MARTIN LUTHER KING PARK RECOMMENDED IMPROVEMENTS

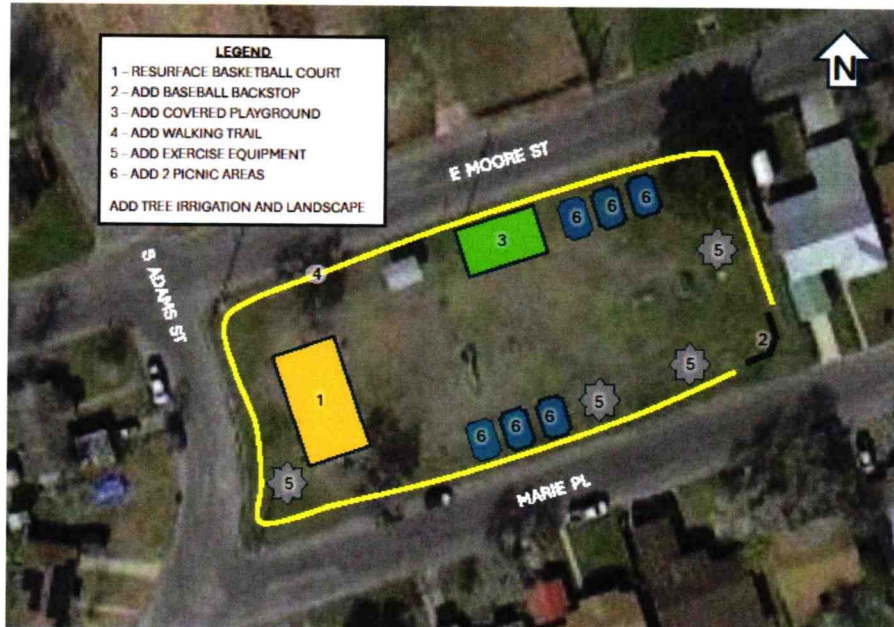




# MOORE PARK CURRENT AMENITIES



# MOORE PARK RECOMMENDED IMPROVEMENTS



# POESTA PARK CURRENT AMENITIES



# POESTA PARK RECOMMENDED IMPROVEMENTS





# CARLOS REYES PARK CURRENT AMENITIES



# CARLOS REYES PARK RECOMMENDED IMPROVEMENTS



# TREVINO PARK CURRENT AMENITIES



# TREVINO PARK RECOMMENDED IMPROVEMENTS

